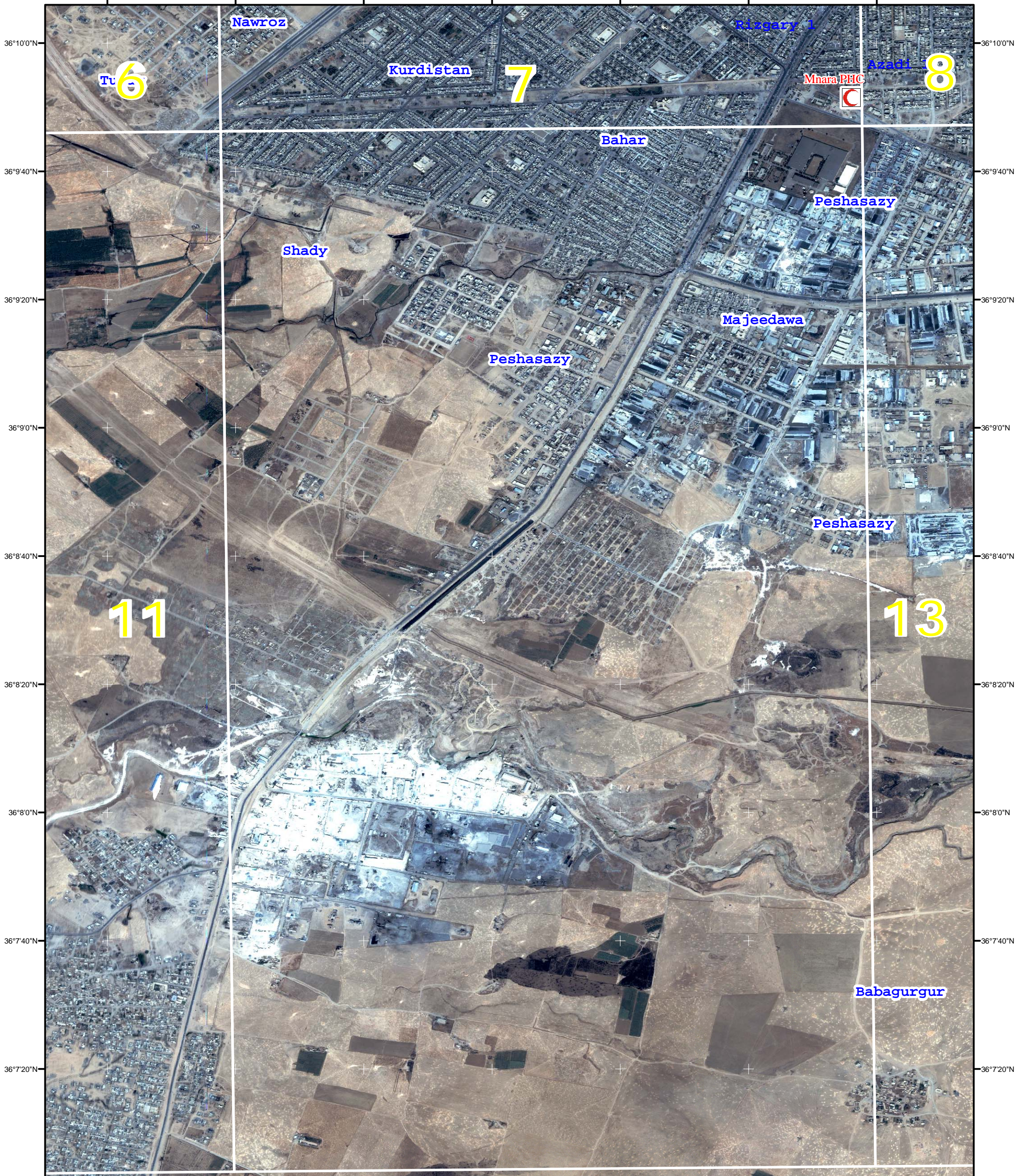
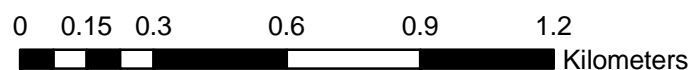


43°58'0"E 43°58'20"E 43°58'40"E 43°59'0"E 43°59'20"E 43°59'40"E 44°0'0"E



43°58'0"E 43°58'20"E 43°58'40"E 43°59'0"E 43°59'20"E 43°59'40"E 44°0'0"E

1:17,000



Geographic Coordinate System: Lat Long WGS84  
Datum: D WGS 1984



**Ministry of Planning**  
**Joint Humanitarian Information Center (JHIC)**  
Erbil 2007




# ERBIL CITY CENTER

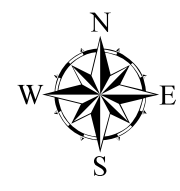
## Atlas of Health

HEALTH FACILITIES IN THE  
KURDISTAN REGION THREE GOVERNORATES

Erbil Over view  
Map Page 12

### Legend

-  Hospital
-  Primary Health Center
-  Other Health Facility



**Comment**  
This map gives geographic information about health centers for the yellow highlight cell in the Kurdistan Region Three Governorates

This Product is undertaken with Ministry of Health cooperation, and the data have been provide by them  
The designations and the presentation of this map do not imply the expression of any opinion whatsoever on the part of the JHIC concerning the legal status of any country, territory or city.

