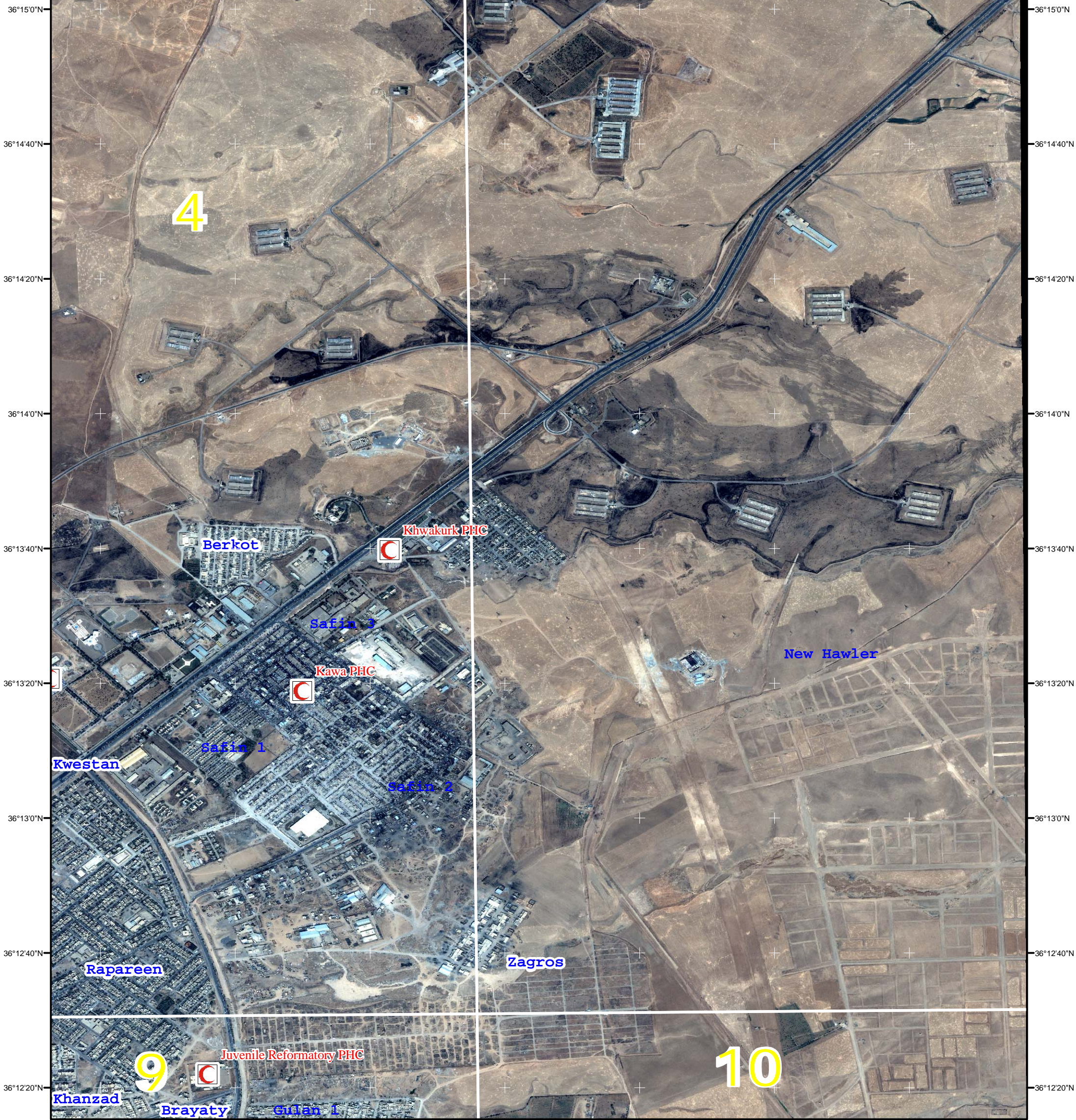
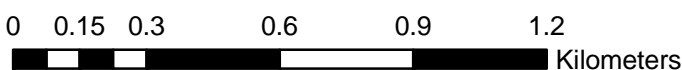


44°2'20"E 44°2'40"E 44°3'0"E 44°3'20"E 44°3'40"E 44°4'0"E 44°4'20"E



44°2'20"E 44°2'40"E 44°3'0"E 44°3'20"E 44°3'40"E 44°4'0"E 44°4'20"E

1:17,000



Geographic Coordinate System: Lat Long WGS84
Datum: D WGS 1984



Ministry of Planning
Joint Humanitarian Information Center (JHIC)
Erbil 2007

ERBIL CITY CENTER




Atlas of Health

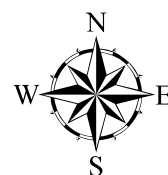
HEALTH FACILITIES IN THE
KURDISTAN REGION THREE GOVERNORATES

Erbil Over view
Map Page 5

Comment
This map gives geographic information about health centers for the yellow highlight cell in the Kurdistan Region Three Governorates

Legend

-  Hospital
-  Primary Health Center
-  Other Health Facility



This Product is undertaken with Ministry of Health cooperation, and the data have been provide by them

The designations and the presentation of this map do not imply the expression of any opinion whatsoever on the part of the JHIC concerning the legal status of any country, territory or city.

